

# **Pivik Elementary Monthly Progress Report**



**February 14, 2012**

**Russo Construction Services  
(PBSD Owners Representative)**

# **January Monthly Report**

## **“Project is on schedule”**

- Interior masonry complete in area D
- Interior masonry 60% complete in area B
- Interior masonry started in areas A & C
- Brick veneer completed in areas B & D
- Brick veneer started in area C
- Sprinkler rough in completed in areas B,C,D and ongoing in area A
- Mechanical rough completed in areas B & D and ongoing in areas A & C (All roof top units are set)
- Plumbing rough is complete in areas B & D and ongoing in areas A & C
- Electrical rough is complete in areas B & D and ongoing in areas A & C
- Boilers are built
- Electrical equipment is being installed in mechanical rooms
- Roof is 100% dry and detailing is ongoing
- Door jambs are set in classroom wings, admin areas and ongoing in areas A & C

- Caulking is ongoing in all areas
- Painting is ongoing in classroom wings
- Framing and drywall is ongoing in classroom wings
- Case work has been field measured and released for fabrication
- Canopy steel has been set and detailing is ongoing
- 2 sets of stairs are set and 2 more are being fabricated
- Metal siding is ongoing
- Windows in classroom wings are 80% complete and will continue as areas become available
- Telephone pole and transformer are set at road
- Water meter pit is being delivered this week

### **“Items for board review and approval”**

- Change orders are being reviewed and discussed this month as per agenda
- Building name is to be decided upon this month so signage can be released
- Playground equipment meetings have taken place with administration, PTA, and Rucon. Discussion to take place with board this month

- Site inspection for safety and Allegheny conservation district took place and all is in compliance
- Overall project schedule is being updated by Rucon and Nello with a date of 2-15-12 project is 65% complete to date

## Project Photos



Pivik teacher walkthrough

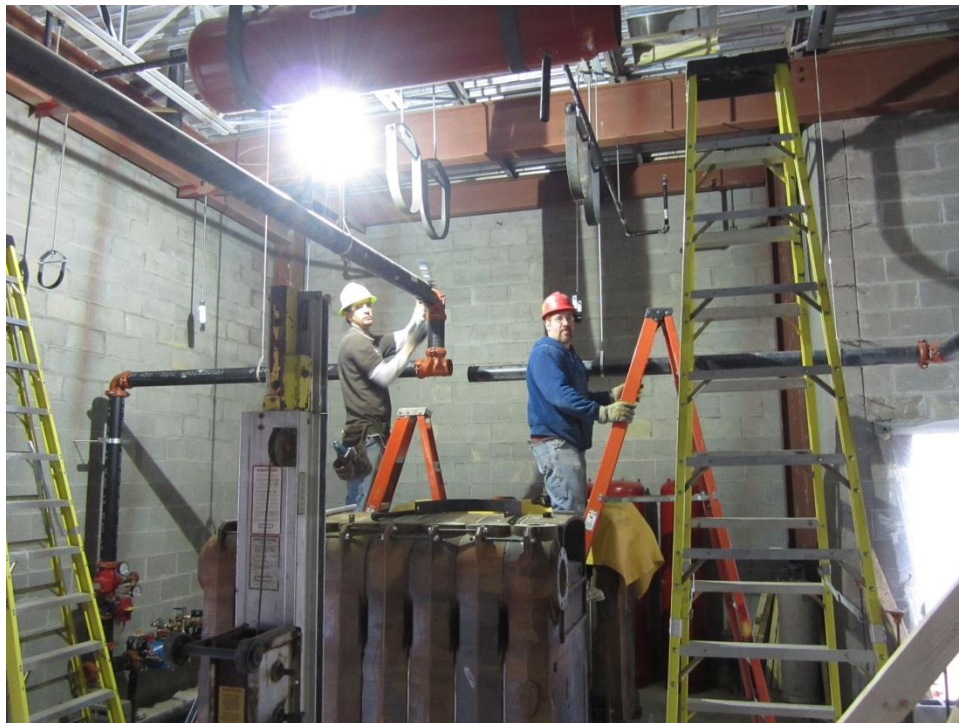


Interior bulkheads





Stairwell area d



Boilers and sprinklers



Electrical equipment room



Canopy steel





Entrance canopy



Water heaters





Siding low roof c



Roof detailing